

HD-E801 Ozone Aging Test Chamber

1.GENERL SPECIFICATIONS:

Packaging Dimensions: (WxDxH) 1200*1200*1950mm

Power supply source: single-phase, 220V±10%, 50Hz (can be appointed)

Gross Weight: 280kg

HS Code: 8479899990

2.Standard Features:

Model	HD-E801
Internal dimension (WxDxH)	500*600*500mm
External dimension (WxDxH)	1000*1000*1750mm
Temperature range	RT+10~ 60°C (suggest to use 40°C ± 2°C)
Temperature Fluctuation	±1°C
Humidity range	30%~90%RH
Humidity fluctuation	±3%RH
Ozone concentration	50~1000 pphm, adjustable
Ozone concentration deviation	±10%
Sample holder	SUS#304 stainless steel
Temperature controller	Programmable touch screen controller
Ozone concentration analysis	Concentration analysis meter
Ozone generator	High pressure silence discharge type
Protection system	Leakage, short circuit, over temperature, over heat
Test criteria	ASTM D1149, ISO 1431, JIS K6259...

3.Chamber Structure And Features:

- 1, Internal material adopts high quality mirror stainless steel for ozone resistance.
- 2, Insulation material: high-density glass fiber
- 3, Use long axial fan motor and high and low temperature resistant aluminum alloy wing type wind turbines to force vertical air circulation.
- 4, Chamber door adopts double layer high and low temperature resistant silicone seal ensure the airtight test area.
- 5, Chamber bottom has high quality caster for convenient move.
- 6, Observation window uses multilayer hollow tempered glass.

7, Exhaust system: exhaust the high concentration ozone from the test chamber to avoid to poison.

8, Optional: Built-in 360 degree rotation sample holder, including 3 sets static tensile fixture and 3 sets dynamic tensile fixture.

4.Control System:

1, With imported micro-computer LCD controller to control the temperature.

2, PID control

3, With auto calculation function to reduce the setting inconvenience.

4, Heater: fin type radiator pipe nickel-chromium alloy u-shaped heater, auto calculate with high accuracy PID + SSR control

5, Temperature measurement: SUS#304, PT 100

5.Standard Configuration:

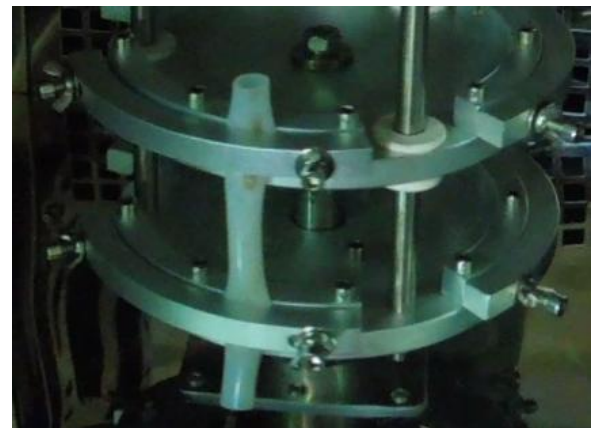
1, Power line x 1pc

2, Sample holder x 1set

3, Fuse x 1set

4, Operation manual x 1set

6.TURNTABLE SAMPLE HOLDER WITH TENSILE FIXTURE:



7.PLC OPERATION:

